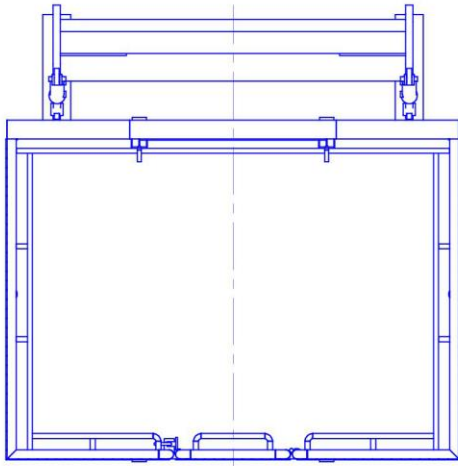




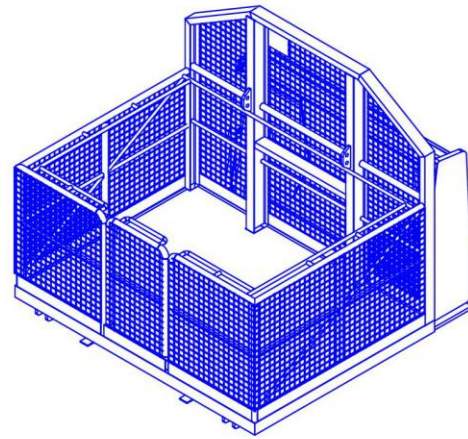
Contatore Engineering offer an EWP that is self levelling for Non-parallel lift Wheel loaders. Built to AS1418.10-2004, AS3990 and is Worksafe W.A. approved.

The functions of the EWP are controlled from the loader cabin and EWP console. An emergency lowering lever is also located at ground level on the loader to lower the EWP in the event of total machine failure.

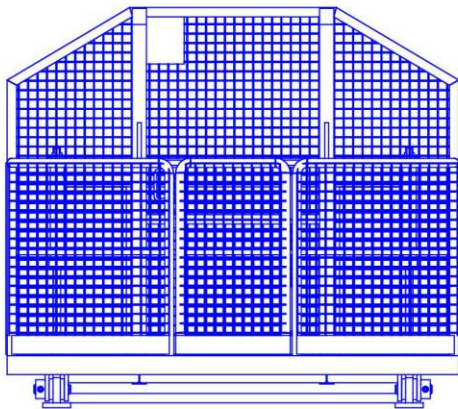
- Self levelling work platform.
- 950 KG Working Load Limit (WLL).
- Modern design with quality robust construction.
- Worksafe WA approved, Design registration № WAH21171
- Manual override control to lower EWP in an emergency.
- Lanyard connection points for up to four personnel.



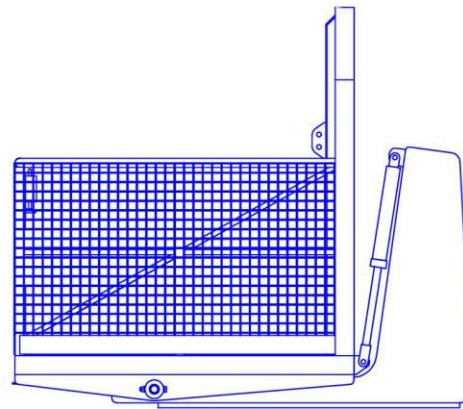
**PLAN VIEW**



**ISOMETRIC VIEW**



**FRONT VIEW**



**SIDE VIEW**

- The elevated work platform is custom made to suit your wheel loader requirements.
- Dimensions for the platform section are:
  - 2400mm (wide / front view)
  - 1800mm (deep / side view)
  - 1850mm (high / floor to top to frame /side view)
- Overall dimensions for the complete unit are:
  - 2400mm (width / front view)
  - ~ 2400mm (deep / depends on the loader connection type / side view)
  - ~ 2125mm (high /side view)



[www.contatoreengineering.com.au](http://www.contatoreengineering.com.au)

97 Radium Street  
Welshpool, WA, 6106

☎: (08) 9356 2725

☎: (08) 9351 8275

✉: [admin@contatoreengineering.com.au](mailto:admin@contatoreengineering.com.au)